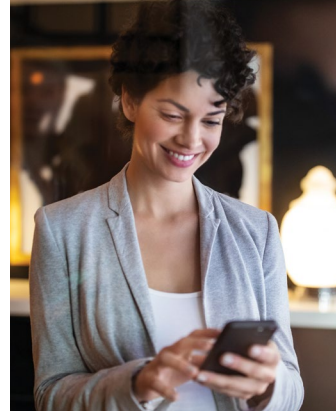




**SOMPO
INTERNATIONAL**

SEEKING THE NEXT GENERATION



Start Your Career With An Industry Leader

Interested in a career in the Insurance industry?

At Sompo International, we offer graduates a broad range of career paths including:

- Underwriting
- Catastrophe Modeling
- Actuarial
- Risk Control
- Claims

Working directly with industry leaders you will build the skills and relationships necessary to develop yourself both personally and professionally.

Through hands-on experience and exposure to our talented team of professionals, you will have the opportunity to make an immediate impact and contribute to our success.



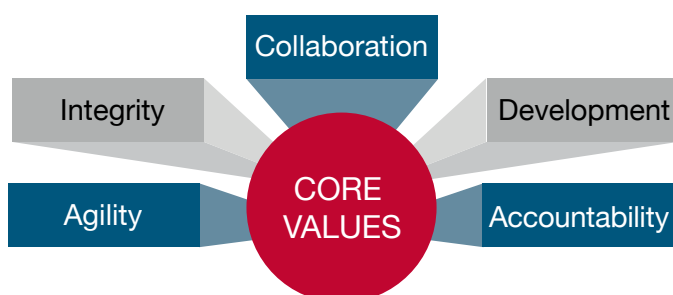
Our Culture

At Sompo International, we strive to create exceptional value for our clients and shareholders while maintaining Sompo International as an attractive place to work.

As a leading global provider of insurance and reinsurance, we recognize that our success is derived directly from those who matter most: **our people**.

While many companies say their people are their most valuable resource, we invest in our employees through a variety of growth and training programs as well as opportunities to give back to the communities in which we live and work.

Sompo International also believes in an organizational environment where everyone belongs, we proudly are a multi-racial, multi-cultural, global enterprise. We reject all forms of racism, bigotry, prejudice and injustice.



Social Outreach

In line with Sompo International's corporate values, dedicating time to our local communities strengthens our organization through teamwork and service. Sompo International's annual [Community Enhancement Day](#) was established in 2011 and since that time, our employees have donated more than 10,000 hours of service benefiting a variety of charities around the world. In addition to our annual employee day of service, Sompo International also gives back through:

- Matching Gifts program
- Participation in the Insurance Industry Charitable Foundation
- Corporate sponsorship of numerous cultural and educational institutions



Community Enhancement Day Contributions to Date

Charitable organizations that benefited:	200+
Participating offices:	22
Employees participating:	Over 500
Volunteer hours:	Over 10,000

Training Opportunities

Our people are our competitive advantage and we demonstrate our commitment to our employees by offering numerous learning and development opportunities, including:

- Professional Development Programs (ie. CPCU)
- Tuition Reimbursement
- Study hours for accreditation exams, such as the Actuarial exams



Performance Management

We foster an environment of ongoing, open dialogue between managers and their direct reports. Employees are encouraged to take an active role in the performance management process, including:

- Creating objectives with their managers
- Preparing self-assessments
- Crafting development action plan

Sompo International Opportunities

Sompo International is constantly expanding its products and offerings by adding and developing new talent, whether that means hiring entire teams or expanding our current businesses. In addition to entry-level positions, Sompo International has many opportunities for passionate & driven industry professionals.



VISIT OUR CAREER SITE

Our current job opportunities are listed on our website: www.sompo-intl.com/careers or follow us on [LinkedIn](#).

RECRUITING CONTACTS

U.S. Insurance

Megan Connors

Assistant Vice President

T +1 917 421 4968

E mconnors@sompo-intl.com

Brooke Kohlmeier

Human Resources Manager

T +1 615 553 9582

E bkohlmeier@sompo-intl.com

Global Risk Solutions

Geynille Conover

Assistant Vice President

T +1 212 209 6504

E GRSRecruiting@sompo-intl.com

Bermuda

Jill Brewer

Human Resources Manager

T +1 331 278 0491

E jbrewer@sompo-intl.com

Claims

Alyssa Benincaso

Human Resources Advisor

T +1 914 468 8615

E abenincaso@sompo-intl.com

About Sompo International

The Sompo International companies are wholly owned subsidiaries of Sompo Holdings, Inc., whose core business encompasses one of the largest property and casualty insurance groups in the Japanese domestic market. Sompo International is a global specialty provider of property and casualty insurance and reinsurance. Sompo International underwrites agriculture, professional lines, property, marine and energy, and casualty and other specialty lines of insurance and catastrophe, property, casualty, professional lines and specialty lines of reinsurance. We maintain ratings of A+ (Superior) from A.M. Best (XV size category) and A+ (Strong) from Standard & Poor's.

Sompo has an extensive global footprint with nearly 80,000 employees in 228 cities in 30 countries and its core business encompasses one of the largest property and casualty insurance groups in the Japanese domestic market. Sompo's financial strength, broad licensing capabilities, diverse products and distribution networks, and market leading technology make Sompo a preferred partner for clients around the globe.



**SOMPO
INTERNATIONAL**

To learn more about us, please visit: www.sompo-intl.com